

Dell ESM Sales Engineering

Automating Profile Migration with K1000 and Tranxition Migration Manager

Automating User State migrations

Jamie Cerra
2/17/2016



Contents

Introduction.....	2
Overview of Tranxition Migration Manager.....	3
Scripting with the K1000.....	4
Setting up the Migration Manager Installation.....	4
Using the Unattended Command Lines.....	4
Creating the KACE Script to Backup Profiles.....	6
K1000 Script.....	6
Creating the Profile Injection Script.....	7
Extending Profile Restoration to the KACE 2000 Deployment appliance.....	7
Conclusion.....	8

Introduction

In this document we will explore how to utilize the K1000 and K2000 series appliances to backup and restore user profiles using Tranxition Migration Manager product.

Tranxition has partnered with Dell KACE to offer a robust platform to migrate and restore user data from one system to another. The Migration Manager tool allows administrators the flexibility to backup profile data and application settings from different versions of Windows operating systems, including Office settings, and easily migrate them to another system. This can be done regardless of the version of OS and includes the ability to migrate settings from Office 2003 up through Office 2013 among many other applications seamlessly. Using this tool, Administrators can:

- Simplify their OS Migration strategies
- Ensure continuity of data and settings throughout a complete OS migration
- Minimize user downtime due to migrations

After completing this document, you should be able to:

- Understand how to use the K1000 scripting module to automate profile backups
- Use the K1000 to backup / restore profiles to any machine
- Understand how Migration Manager can extend functionality to the K2000 during OS deployments/Migrations
- Customize profile backups to ensure data consistency during an OS migration.

Overview of Tranxition Migration Manager

The Tranxition Migration Manager tool is designed to provide robust profile backup and restoration for Windows computers. Traditional tools like Microsoft's User State Migration Tool (USMT), while functional, do not provide the level of detail and compatibility that are often required when performing profile backup and restoration.

Using Migration Manager will not only allow for a simple automated backup and restore of user profile data, but will allow that profile to carry more information and be able to translate it to the new system. As an example, a user running Windows XP 32 bit with Microsoft Office 2010 could be migrated seamlessly to a new machine running Windows 10 x64 and Microsoft Office 2013 while retaining application specific settings for Office, Firefox, Chrome and Adobe Acrobat as well as other common applications.

We cannot go into the full details of the capabilities of the Migration Manager tool in this document, Details can be found on the Tranxition website:

<http://tranxition.com/product/migration-manager>

Scripting with the K1000

This section will cover how to use Migration Manager automated scripting capabilities with the K1000 Systems Management appliance. In order to utilize Migration Manager in a scripted mode, it should be installed on member server that will have access to sufficient storage for profile backups.

Note:

Migration Manager uses the term "personality" in place of the standard user profile since the tool can back up more than what exists in the standard user profile directories. This document however will refer to the common term of profiles.

Setting up the Migration Manager Installation

Install Migration Manager on a server in the network. By using the defaults, it will create a directory on the root of C: called Migration Manager. The application files will live here. This should be shared so that everyone can have read access. Once installed, create a directory that is shared and can be written to in order to store the profile backup data. This example will refer to 2 shares: C:\MigrationManager for application files, and C:\MigrationData for profile backup storage.

Using the Unattended Command Lines

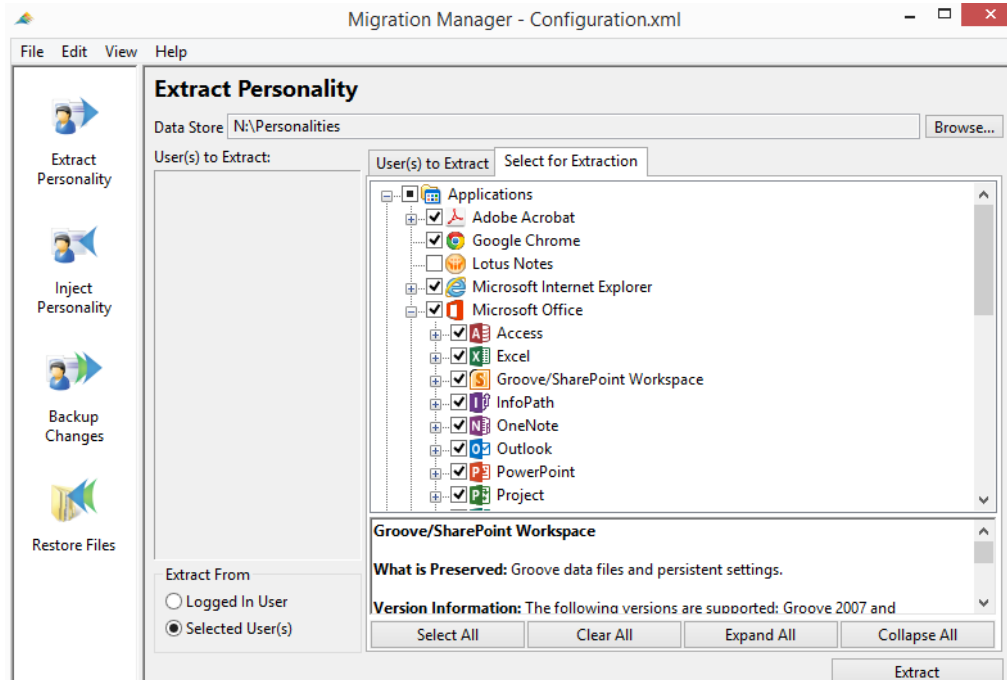
Migration Manager comes with detailed documentation about using command line arguments to automate profile backups. Full list of automation commands can be found here:

[Automating Migration Manager](#)

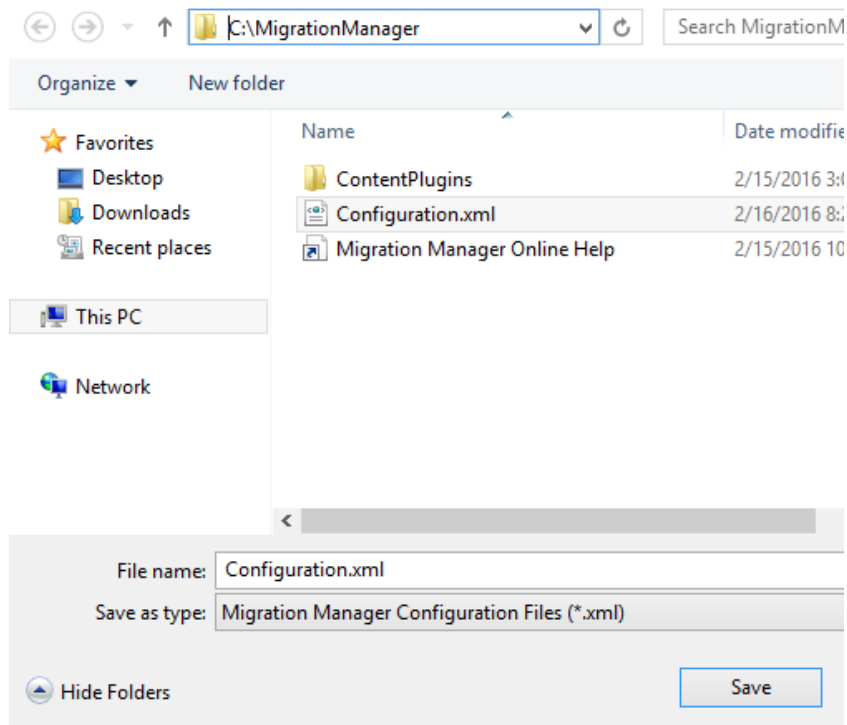
In this example we will back up all profiles except local users.

Once Migration Manager is installed, a configuration file should be created which allows the administrator to choose the specific elements of the user profile that should be backed up. These settings will be saved in an XML file and should be placed in a directory that is accessible with at least read access. In this example we will store the XML file in the same directory as the data.

Open the Migration Manager application by running the MigrationManager.exe file in the Migration Manager Installation directory.



Choose the Save As feature once you have selected the appropriate options. Name the file and directory to store the XML file.



Next we need to develop the KACE script that will call the profile extraction tool and backup the profiles to the server.

Creating the KACE Script to Backup Profiles

Using the K1000 scripting module, we can call the Migration Manager executables and run profile extraction on targeted Windows systems.

K1000 Script

Create a new KACE script as an Online Shell Script and configure the script with the following parameters:

- Run the script as a domain user that has administrative rights
- In the script section, enter the following text for the batch file (replacing your specific server name and shares)

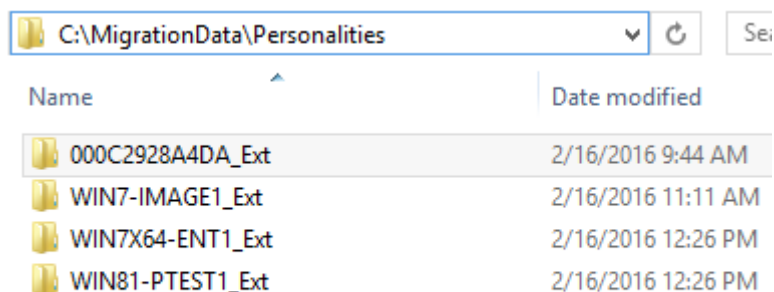
```
start /w \\<server>\MigrationManager\MigrationManager.exe /autoextract /hidestatus /config \\<server>\MigrationData\Configuration.xml /ALLUSERS /EXCLUDELOCAL /DATASTORE \\<server>\MigrationData
```

This command will run the Migration Manager tool, extract all the domain profiles using the profile.xml configuration file and store them in the MigrationData share on the server.

Save the script and run this on computers that contain profiles you would like to backup.

Once the script is run, the profiles will be saved on the server in the MigrationData directory. The EXT following the PC name denotes that this directory contains a profile extraction.

When extracting profiles using the K1000, profiles are stored by machine name that they are captured from. When extracting profiles using K2000 pre-installation scripts, machines are noted by MAC address.



Name	Date modified
000C2928A4DA_Ext	2/16/2016 9:44 AM
WIN7-IMAGE1_Ext	2/16/2016 11:11 AM
WIN7X64-ENT1_Ext	2/16/2016 12:26 PM
WIN81-PTEST1_Ext	2/16/2016 12:26 PM

If you are planning a hardware replacement, then one method of restoring profiles could be to back up the profiles using the K1000. This will generate the **<PC Name>_Ext** directory from the source machine. If you know the MAC address of the replacement PC, you can rename the backup directory to **<MAC Address_NewPC>_Ext** and this will allow K2000 scripts to inject the backed up profiles automatically into the new system.

Creating the Profile Injection Script

Similar to the profile extraction, scripts can be created to inject profiles from the backup location to an existing machine.

Create a new KACE script as an Online Shell Script and configure the script with the following parameters:

- Run the script as a domain user that has administrative rights
- In the script section, enter the following text for the batch file (replacing your specific server name and shares)

```
START /w \\<server>\MigrationManager\MigrationManager.exe /autoinject /DATASTORE \\<server>\MigrationData /SOURCE <source-PC> /INCLUDEUSER domain\user1 domain\user2 etc...
```

Note:

Migration Manager documentation fully outlines parameters that can be used in profile injection. Please refer to Migration Manager docs for full usage parameters.

Script

Script Text:

```
START /w \\<server>\MigrationManager\MigrationManager.exe /autoinject /DATASTORE \\<server>\MigrationData /SOURCE <source-PC> /INCLUDEUSER domain\user1 domain\user2
```

1 - KACE Script Example

Extending Profile Restoration to the KACE 2000 Deployment appliance

The K2000 can be used to restore profiles to machines at the time of imaging with similar scripting. This will be covered in a separate whitepaper which will outline the release of Migration Manager that is compatible with the Windows PE kernel used in the KACE Boot Environments (KBES).

Conclusion

When used in conjunction with the K1000 appliance, Migration Manager is a powerful profile backup and restoration tool that will enhance your ability to perform OS migrations keeping important user data and application settings intact.